



Violin 2

buzz/click/sub at frog

mp

This system shows a musical staff with rhythmic notation consisting of 'x' marks and horizontal lines. A waveform below the staff shows a series of pulses and a larger, broader pulse.

scrub

This system features a double bar line symbol on the left. The musical staff contains rhythmic notation with a 'scrub' instruction. The waveform below shows a long, low-amplitude pulse.

drop jete to scrub tone

mp > *pp* *mp* > *pp* *mp* > *pp* *mp* > *pp* *mf* > *pp*

This system includes a double bar line symbol and five groups of rhythmic notation. Each group has a dynamic marking and a wedge-shaped hairpin indicating a change in volume. The waveform below shows several distinct pulses.

(lifted)
V V V V

(subtone)

(ponticello)

pp *mp* *f* *mf* *fp* > *pp*

This system starts with a double bar line symbol and includes specific performance instructions: '(lifted) V V V V', '(subtone)', and '(ponticello)'. The musical staff shows rhythmic notation with dynamic markings. The waveform below is more complex, showing multiple overlapping pulses.

15va
ppp < ff

15va
ppp < ff

15va
ppp < ff

15va
ppp < ff

tr pppp

almost no pitch
very scrubby, medium/high pressure



increase pressure (scrub-subtone) unstable: listen for fluctuations

f moderately slow, deliberate bow speed

pp mf p mp p



ff mp ff

increase pressure/distort

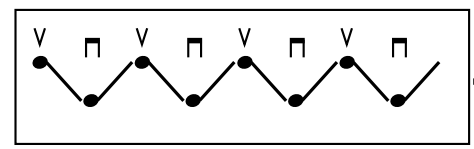
harmonic

pp

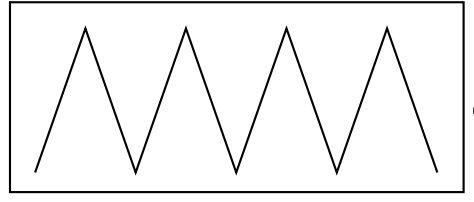
slow with decrescendo

maintain slower speed

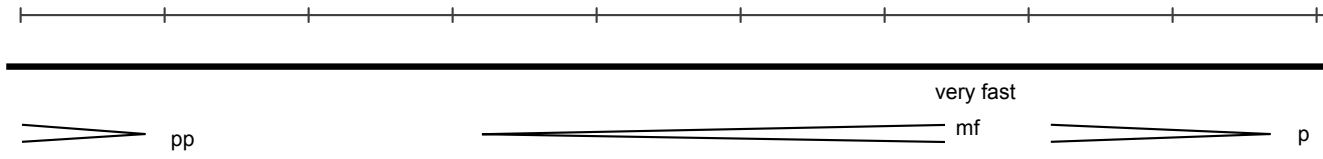
ppp f



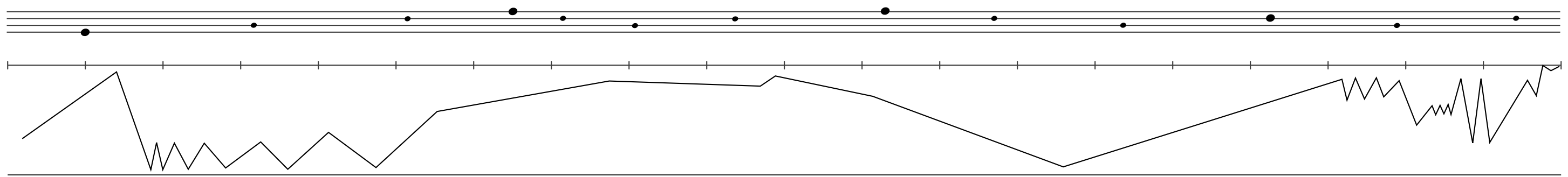
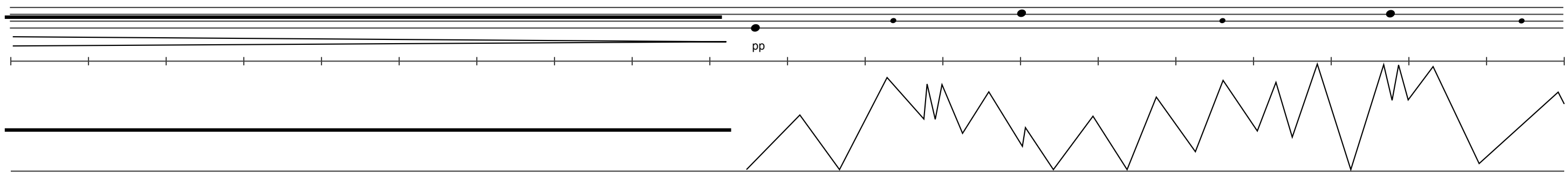
decouple right hand and left hand



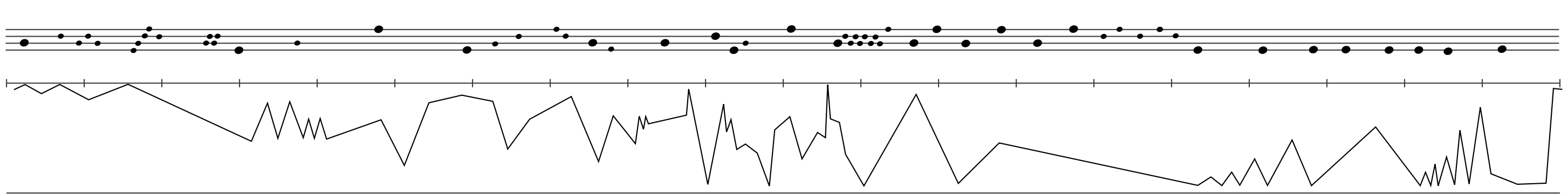
ad lib change in speed in either hand



harmonics



mix in dynamic changes, pressure changes



A musical staff with notes on a five-line system. Below the staff is a waveform showing amplitude over time. The notes are mostly on the upper lines, with some higher notes in the middle of the staff.



A musical staff with notes on a five-line system. Below the staff is a waveform showing amplitude over time. The notes are mostly on the upper lines, with some higher notes in the middle of the staff.



A musical staff with notes on a five-line system. Below the staff is a waveform showing amplitude over time. The notes are mostly on the upper lines, with some higher notes in the middle of the staff. Dynamics markings include *pp*, *mf*, *pp*, *p*, *mp*, *mf*, *pp*, *mp*, *pp*, *ppp*, and *mp*. There is a trill marking *tr* at the beginning. The waveform shows a complex pattern of amplitude changes.



A musical staff with notes on a five-line system. Below the staff is a waveform showing amplitude over time. The notes are mostly on the upper lines, with some higher notes in the middle of the staff. Dynamics markings include *ff*. There is a trill marking *tr* at the beginning. The waveform shows a complex pattern of amplitude changes.

ff

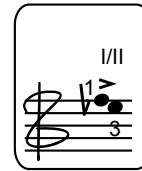
tr

ff

ff



(roughly maintain the detuned unison over all registers)
detuned I/II



(maintain the same physical finger position overall registers, even expanding it somewhat when reaching upwards: do NOT maintain the pitch interval in the extreme upper register the pitch on the lower string should be a 2nd or 3rd higher than the pitch on the E string)

